

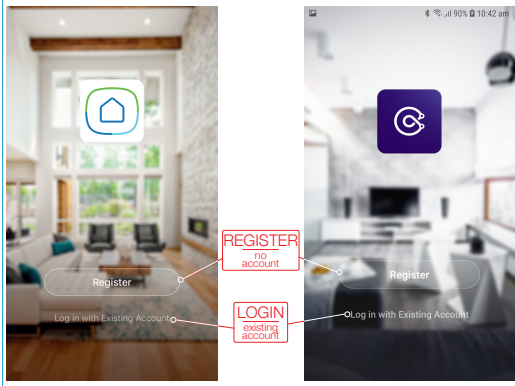
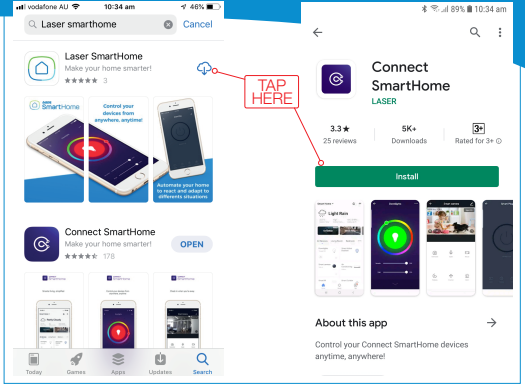
# Manual

## Smart Plug with 2 x USB & Power Monitoring

(CSH-PLGUSBPM / LSH-PLGUSBPM)

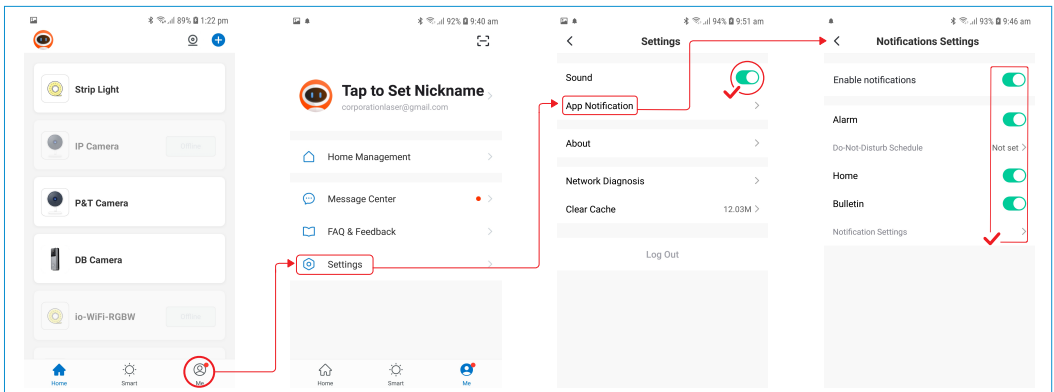
### 1 GET THE APP

QR Codes for Downloading Apps



### 2 REGISTER OR LOGIN TO APP

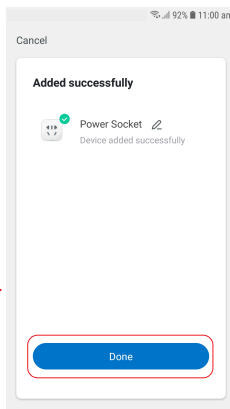
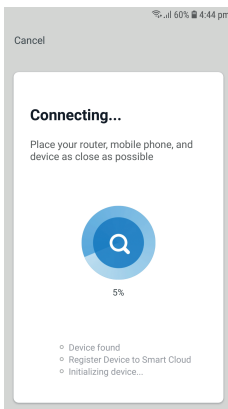
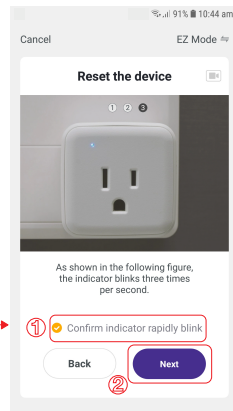
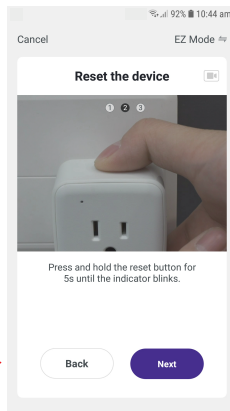
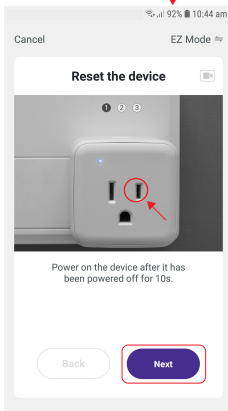
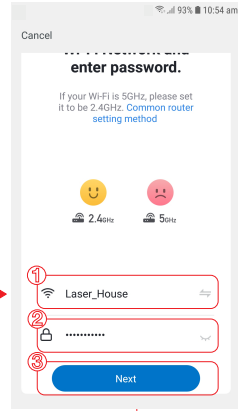
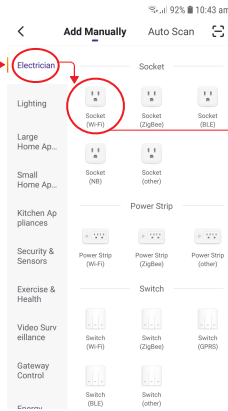
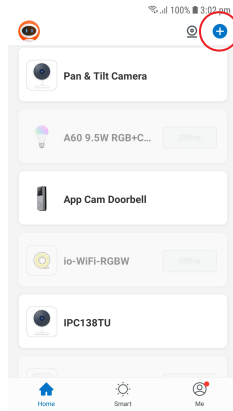
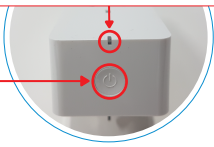
### 3 RECOMMENDED APP SETTINGS



# 4 | CONNECTING PLUG TO APP


While connected to power, press and HOLD button for approx 8 seconds to put device into pairing mode.

The LED indicator should start flashing BLUE quickly.



**TIP**

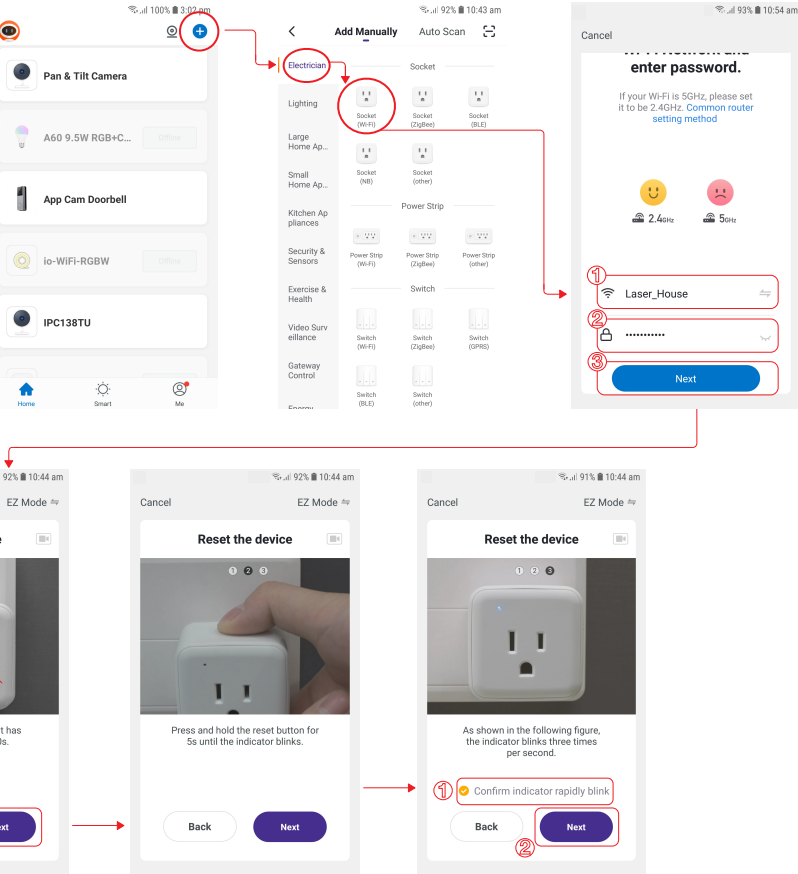
**If device not found please check**



2.4GHz    5GHz

✓            ✗

Only 2.4G Wi-Fi networks are supported



# 5 | USING THE PLUG

**Settings**

Smart Plug - Party Speaker

Power ON / OFF

Power On

Check Energy Usage

Power

Timer

Countdown

Energy

Controls Socket and both USB plugs

Timer

Check Energy Usage

Energy

Today's Power (KWh)

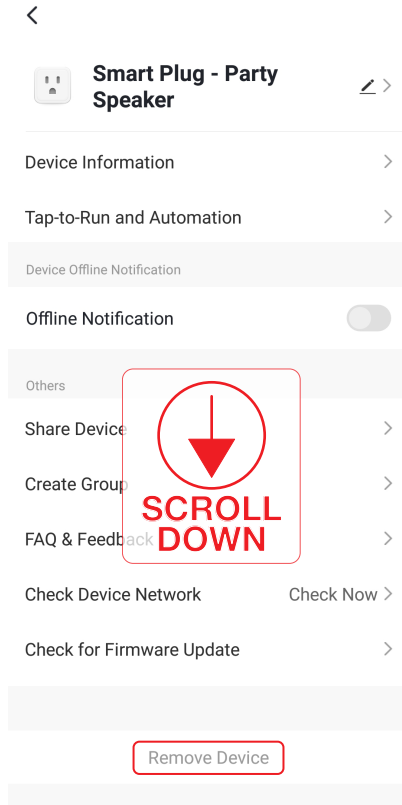
0.0

Current (mA)	Power (W)	Voltage (V)	Total Power (KWh)
62	7.4	240.1	0.00

Year 2020

Change date for data displayed

Sep. 0.00 >



## REMOVING PLUG | 7

### TROUBLESHOOTING

1. If device is not connecting while pairing to the app please check your Wifi username and password are correct and that you are only using 2.4Ghz Wifi connections as the 5Ghz band is not supported.
2. If the device is plugged in and turned on but not showing any signs of power, check any individual power switches that may be on the connected device.
3. All USB plugs and the main socket are controlled by the POWER ON/OFF switch in the App. There is no way to control the USB switches separately.
4. Instructions for Connecting Plug to App advised in this manual are for EZ pairing mode. If the LED light is flashing BLUE slowly then device is in AP Pairing Mode. You can press and HOLD the button again to put back into EZ pairing mode or select AP Mode in the App during the pairing process.

For more helpful guides visit us at



LASER

[www.youtube.com/LasercoAu](http://www.youtube.com/LasercoAu)

CONNECT

[www.youtube.com/channel/UCCYzBiADapJN55Zzp3yfvLQ](http://www.youtube.com/channel/UCCYzBiADapJN55Zzp3yfvLQ)



### WARRANTY

Our goods come with guarantees that cannot be excluded under the Australian Consumer Law. You are entitled to a replacement or refund for a major failure and compensation for any other reasonably foreseeable loss or damage. You are also entitled to have the goods repaired or replaced if the goods fail to be of acceptable quality and the failure does not amount to a major failure.